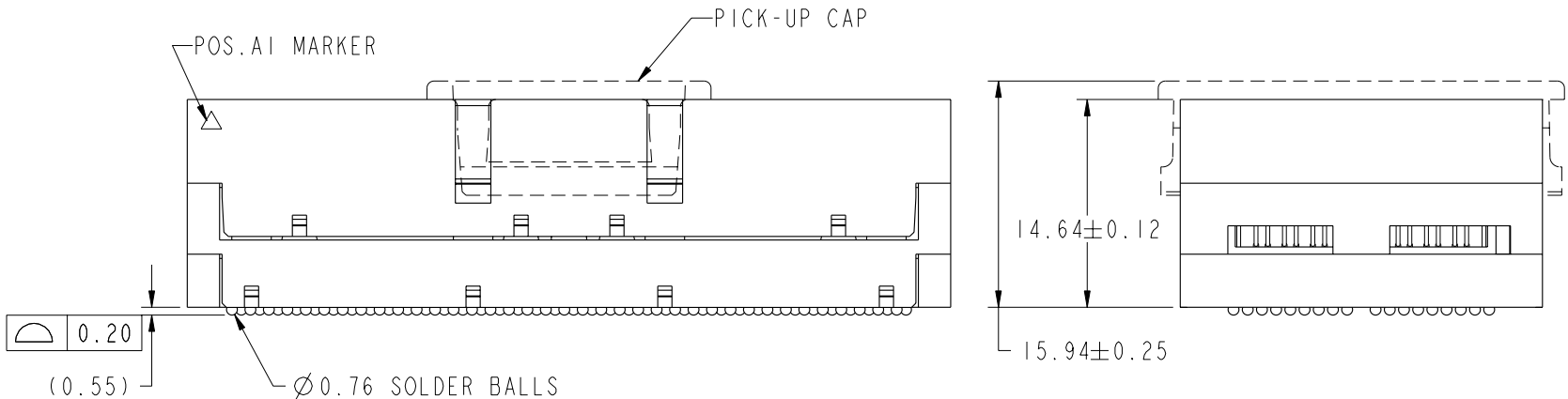
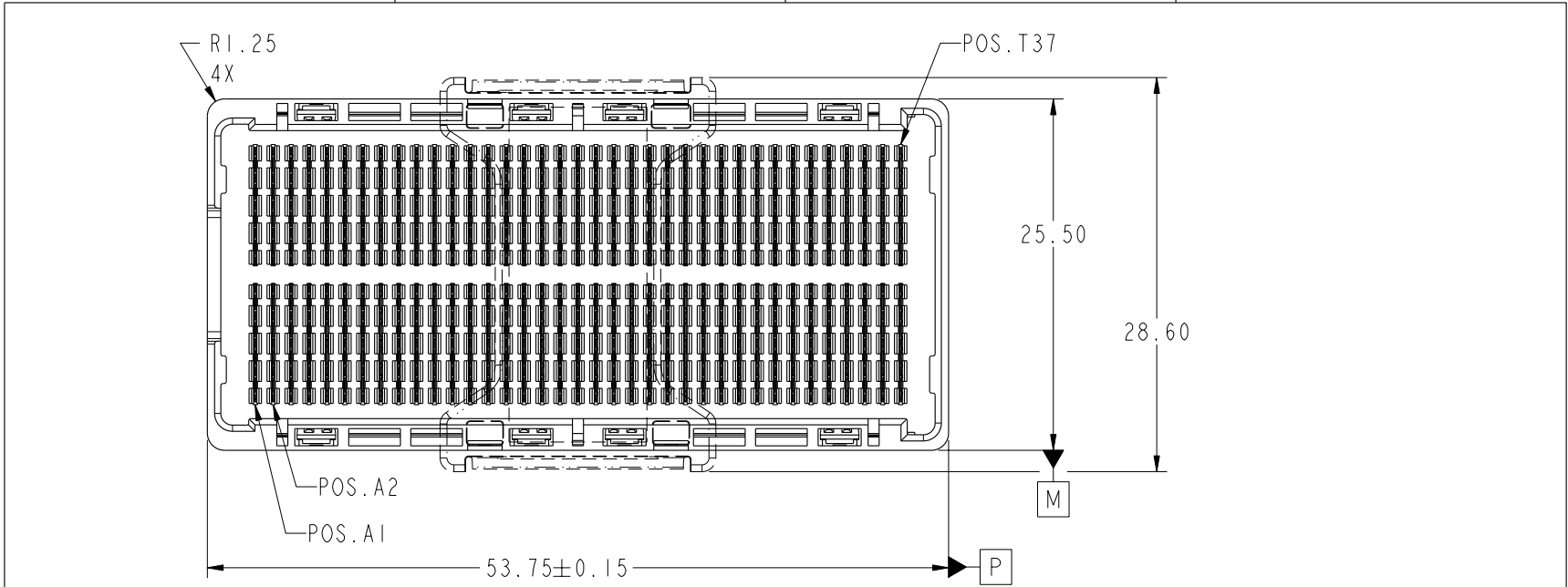




This document is the property of and embodies CONFIDENTIAL and PROPRIETARY information of FCI. No part of the information shown on this document may be used in any way or disclosed to others without the written consent of FCI. Copyright FCI.

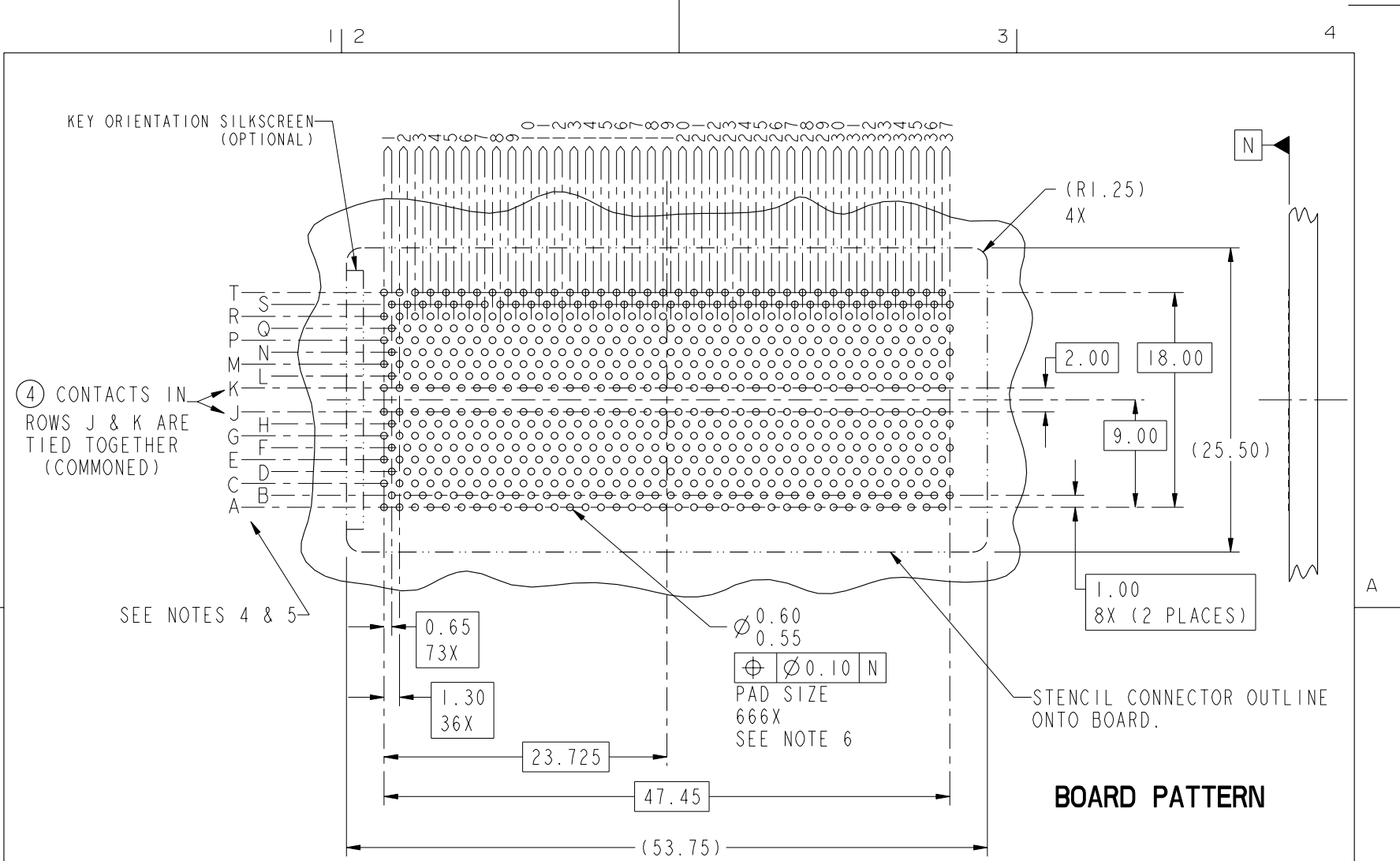


Ø0.76 SOLDER BALLS  
 Ø0.30 P M  
 666X  
 SEE NOTE 2

mat'l code				SEE NOTE 1				tolerances unless otherwise specified				CUSTOMER				FCI www.fciconnect.com			
ltr	ecn no.	dr	date	linear	0.X ±0.3				COPY				title GIG-Array 15mm PLUG ASSY. 296 SIG. POS.						
A	V20428	LRJ	3/11/02		0.XX ±0.10				projection										
B	V03-0427	TAB	04/15/03	angles	0.XXX ±0.050				MM ←→ scale 1:1				product family GIG-Array code 213						
C	V03-0663	TAB	06/12/03		0° ±2°								size dwg no. 55700 sheet 1 of 4						
D	V05-0052	VS	10/14/05	dr	D. WAUGHEN	3/6/01	D. INGRAM 5/4/01 D. JOHNESCU 5/4/01				A								
E	V06-0558	LP	2006/06/12	enr	D. JOHNESCU	1/9/01													
F	V07-0438	LP	2007-07-02	chr	D. INGRAM	5/4/01													
sheet index				revision sheet				F	F	F	F	cage code 22526				4			

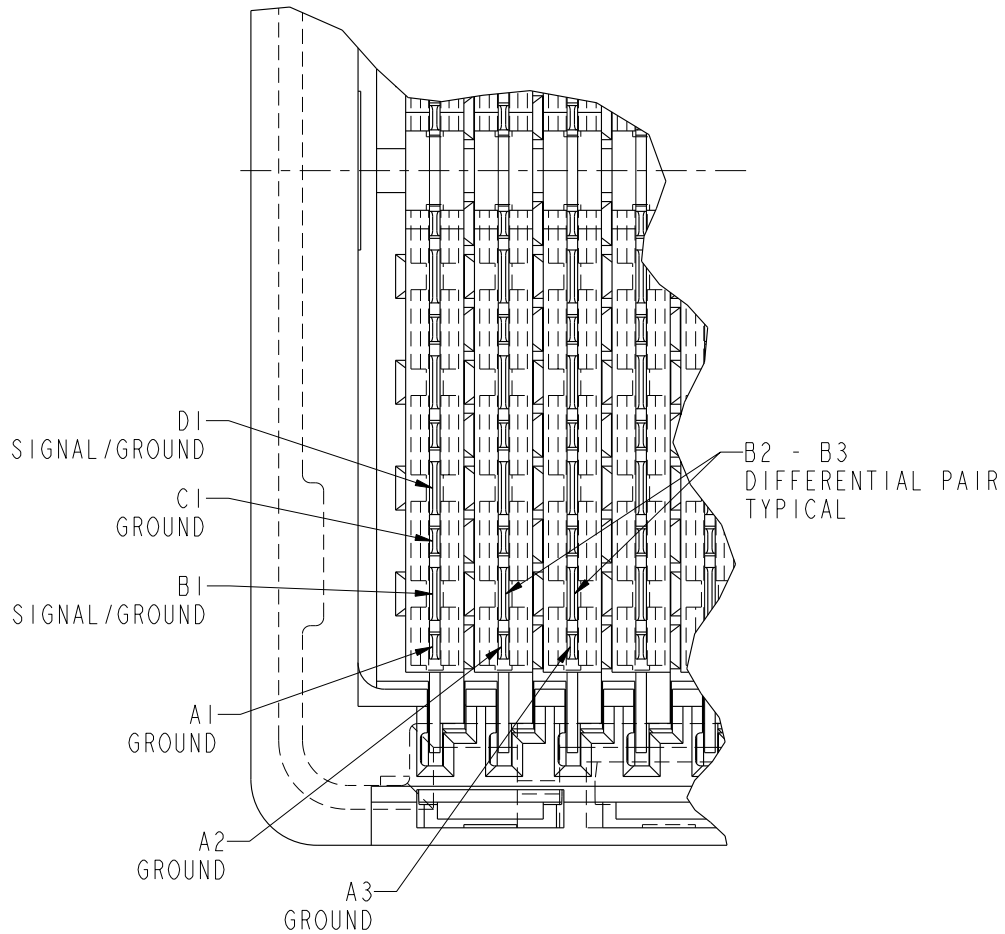


This document is the property of and embodies CONFIDENTIAL and PROPRIETARY information of FCJ. No part of the information shown on this document may be used in any way or disclosed to others without the written consent of FCJ. Copyright FCJ.



**BOARD PATTERN**

mat'l code				SEE NOTE 1		tolerances unless otherwise specified		CUSTOMER		FCJ www.fcjconnect.com	
ltr	ecn no.	dr	date	linear	0.X ± 0.3		COPY		projection	title	
F	-	-	-		0.XX ± 0.10		MM			GIG-Array	
					0.XXX ± 0.050		← MM →			15mm PLUG ASSY. 296 SIG. POS.	
				angles	0° ± 2°		scale		product family		
				dr	D. WAUGHEN	3/6/01	2:1		GIG-Array		
				engr	D. JOHNESCU	1/9/01			code		
				chr	D. INGRAM	5/4/01			size		
				appd	D. JOHNESCU	5/4/01			dwg no		
sheet index		revision sheet						A		213	
								55700		sheet 2	



NOTES:

- ① MATERIAL:  
HOUSING: LCP  
CONTACT: COPPER ALLOY  
PLATING (CONTACT): Au OVER Ni.  
UL RATING: 94 V-0  
SOLDER BALL: (SEE TABLE) EUTECTIC  
SnPb OR LEADFREE 95.5 Sn/4Ag/0.5Cu
- ② SOLDER BALLS WILL NOT BE PERFECT SPHERICAL SHAPE DUE TO REFLOW ATTACHMENT.
- ③ MATED HEIGHT EFFECTED BY CUSTOMERS' PCB PAD SIZE, PLATING, SOLDER REFLOW PROFILE & SOLDER PASTE.
- ④ CONTACTS IN ROWS A,C,E,G,J,K,M,P,R AND T ARE SINGLE BEAM CONTACTS, TYPICALLY USED AS GROUND PINS. (NOTE: CONTACTS IN ROWS J & K ARE TIED TOGETHER [COMMONED])
- ⑤ CONTACTS IN ROWS B,D,F,H,L,N,Q AND S ARE DUAL BEAM CONTACTS, TYPICALLY USED AS SIGNAL PINS.

PLUG INTERFACE DESCRIPTION

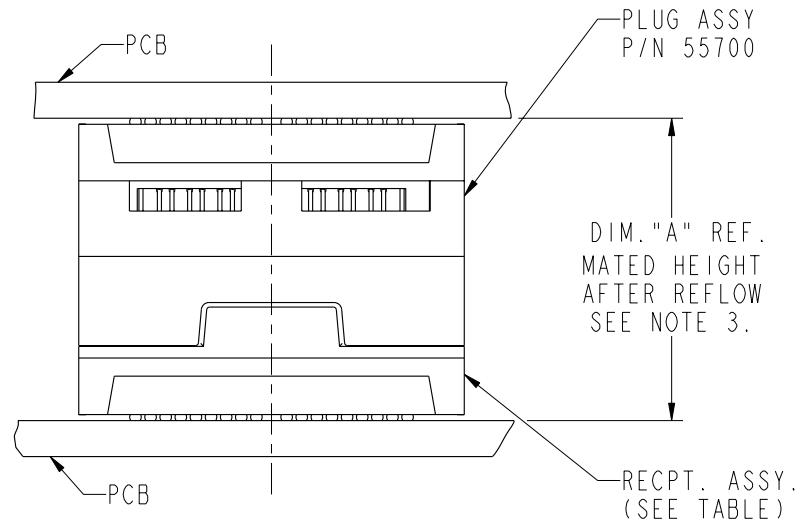
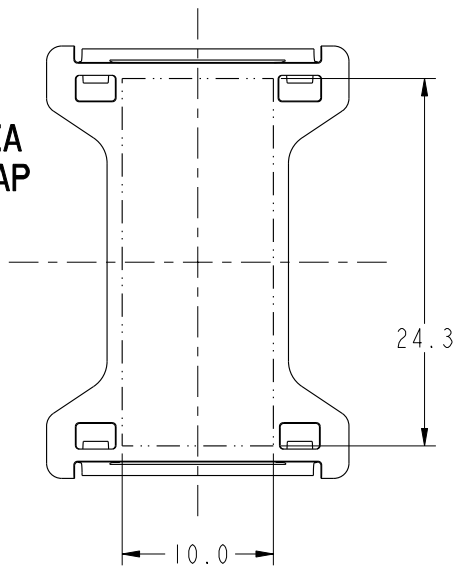
SCALE 7:1

mat'l code		SEE NOTE 1		tolerances unless otherwise specified		CUSTOMER		FCj www.fciconnect.com	
ltr	ecn no.	dr	date	linear	0.X ±0.3	COPY		title	
F	-	-	-		0.XX ±0.10	projection		GIG-Array	
				angles	0.XXX ±0.050			15mm PLUG ASSY. 296 SIG. POS.	
				dr	D. WAUGHEN 3/6/01	MM		product family GIG-Array code	
				engr	D. JOHNESCU 1/9/01			size	
				chr	D. INGRAM 5/4/01	7:1		dwg no	
				appd	D. JOHNESCU 5/4/01			55700	
sheet index		revision sheet						sheet	
								3	

This document is the property of and embodies CONFIDENTIAL and PROPRIETARY information of FCj. No part of the information shown on this document may be used in any way or disclosed to others without the written consent of FCj. Copyright FCj.

PRODUCT NUMBER	SOLDER BALL
55700-001	SnPb
55700-001LF	SnAgCu LEADFREE (7)(8)

FLAT AREA  
PICK-UP CAP



END VIEW OF MATED CONNECTORS

DIM. "A"	RECPT. ASSY. P/N
20	55701
30	55733

NOTES CONTINUED

(6) SPECIFIED POSITIONAL TOLERANCE DEFINES PAD TO PAD LOCATION WITHIN LAND PATTERN. POSITIONAL TOLERANCE OF LAND PATTERN TO FUDICIAL MARKS OR PCB DATUMS SHALL BE DEFINED BY CUSTOMER. FOR RECOMMENDED PRODUCT APPLICATION AND PCB DESIGN DETAILS, SEE DOC. NO. GS-20-016.

(7) FOR PROPER APPLICATION FOLLOW FCI APPLICATION SPECIFICATION GS-20-033 LEADFREE SOLDER BALLS WILL NOT SOLDER PROPERLY IN A LEADED SOLDER PROCESS DUE TO A HIGHER REFLOW TEMPERATURE, LEADFREE PRODUCT IS THEREFORE NOT BACKWARDS COMPATIBLE WITH LEADED OR SOME SOLDERING APPLICATIONS. REFERENCE FCI APPLICATION SPECIFICATION.

(8) THIS PRODUCT MEETS THE EUROPEAN UNION DIRECTIVES AND OTHER COUNTRY REGULATIONS AS DESCRIBED IN GS-22-008. PRODUCT MEETING WITH THIS DIRECTIVE IS IDENTIFIED IN THE LOT CODE NUMBER MARKED ON EACH PART BY HAVING AN "X" IN THE SEVENTH CHARACTER POSITION.

mat'l code				SEE NOTE 1		tolerances unless otherwise specified		CUSTOMER		FCI www.fciconnect.com	
ltr	ecr no.	dr	date	linear	0.X ±0.3		COPY		projection	title	
F	-	-	-		0.XX ±0.10		MM			GIG-Array	
					0.XXX ±0.050		1:1			15mm PLUG ASSY. 296 SIG. POS.	
				angles	0° ±2°		scale		product family		
				dr	D. WAUGHEN	3/6/01	A		GIG-Array		
				enr	D. JOHNESCU	1/9/01	A		code		
				chr	D. INGRAM	5/4/01	A		213		
				appd	D. JOHNESCU	5/4/01	A		sheet		
sheet index		revision sheet								4	



This document is the property of and embodies CONFIDENTIAL and PROPRIETARY information of FCI. No part of the information shown on this document may be used in any way or disclosed to others without the written consent of FCI. Copyright FCI.